

Imagine the Possibilities



VACU[®]
PRESS

Vacuum Pressing Systems, Inc.

VACUPRESS VACUUM TECHNOLOGY



The principles of vacuum technology are simple. Atmospheric pressure is very heavy—we have over a ton per square foot pressing upon us at sea level. Luckily, we have an equal amount of internal pressure to keep us from being crushed. When the air molecules are removed from a container—even in small amounts—atmospheric pressure immediately becomes evident.

When air is removed from a closed vacuum bag containing a veneering project, two things happen. First, as the vacuum is created, atmospheric pressure bears down on the work inside the bag with perfect uniformity and enormous pressure. Second, as air is drawn out of the cells in the surface structure of the wood, glue is sucked into these cells. The results are dependable and consistent.

Vacuum Pressing Systems offers two types of laminating systems. The “bag” system which completely envelops the work and the “frame” system with a hinged lid that drops down over the panel being pressed.

Harpsichord by Rod Regier. Photo by Kip Brundage.



ARCHITECTURAL
MILLWORK

FINE FURNITURE

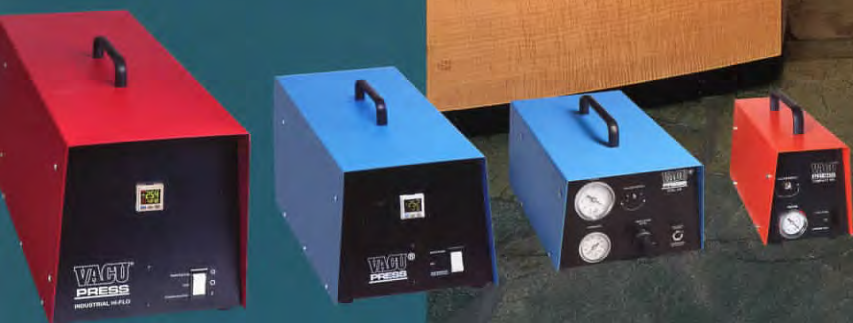
MUSICAL INSTRUMENTS

CABINETS

ANTIQUE RESTORATION

MARQUETRY

SPIRAL STAIRCASES





Curved staircase by Breton Flannery Woodworks. Photo by Brian VandenBrink.

CURVED WORK

Inside and outside technique

Once you have used the VacuPress you will agree that there isn't a better way to veneer curved shapes. Gone are the frustrating hours of trying to perfectly mate male and female forms and striving to wrap shaped pieces with veneer.

For curved work the VacuPress bag system is used in two ways. With the "inner technique," the form and laminations are slid into the bag. With the "outer technique," only the laminations are placed inside the bag. The form stays outside. This second technique is commonly used when the form is too large to practically go inside the bag. You bring the laminations to the shape of the form and the VacuPress clamps all the laminations to each other, eliminating all but a few clamps.

BAG SYSTEM

Flat veneered panels, curved doors, arched jams, shaped parts, cylinders, spiral staircases. When it comes to veneering and forming, no other method has the versatility of a bag system. Our tough, flexible bags will conform to almost any shape. When the pressing process is finished, just roll up the bag and put the VacuPress away. Designed for easy compact storage, the bag system is a must for the space conscious shop.



ZIPPER BAG SYSTEM

Opening on three sides like a suitcase our zipper bags provide the easy access of a frame press while offering the versatility and ease of storage of a regular bag, making zipper bags a perfect blend of the two.



Creating a staircase stringer utilizing the outside technique.



Veneering a curved column utilizing the inside technique

FRAME SYSTEM

Accessibility

When repetition and accessibility are a priority, the FlipTop VacuPress is the answer. Designed for quick and easy access, the frame system is ideal for the shop more frequently pressing flat and low profile curved work, and can afford dedicated space for the frame table. The FlipTop brings a new level of speed and convenience to the vacuum process.



THE RIGHT SYSTEM FOR YOU

Whatever your level of expertise, there's a VacuPress to meet your needs. Whether you're an aspiring woodworker who wants to try your hand at veneering, or a large professional woodworking shop with a specific veneering problem to solve, we have the right VacuPress System for you. Each high-quality VacuPress System has been designed, tested, and proven in our own cabinet shop. We've put our knowledge of woodworking and vacuum technology into each system, and each one reflects the same pride in craftsmanship that you expect from yourself—you can depend on it!



Conference table by JPV Designs.



Dining table by Voltz Clark Associates/designer William T. Georgies.
Photo by Kevin Downey



The number one choice of woodworkers everywhere.

www.vacupress.com

VACUPRESS

I have found one of the great joys of woodworking is the satisfaction and pride that comes from standing back and enjoying the object made with one's own hands, whether it be a single piece of furniture or an entire architectural installation.

Our tools are what we depend on to manifest our ideas. A good tool aids us accurately and efficiently. A great tool helps us expand our level of craftsmanship to new heights, as well as execute projects that would otherwise be too difficult.

In my experience the VacuPress is one these tools. Sometimes woodworking could easily become a series of problems to solve, and the VacuPress would often be part of the solution. But more than that, it kept my creative juices flowing, which for me is what working with wood is all about. This is why we say "Imagine the possibilities".

Darryl Kul





INDUSTRIAL HI-FLO

Modeled after the original Standard *VacuPress*®, this system delivers reliable performance with increased speed needed by large shops.



NEW Digital Vacuum Controls



The Hi-Flo Industrial *VacuPress*® was designed specifically for professional woodworking shops that demand durability, dependability, and versatility from their *VacuPress*®. Modeled after the original Standard *VacuPress*®, the Hi-Flo system delivers the same reliable performance with increased speed often needed by larger shops. This workhorse system offers maximum performance on all levels of veneering and laminating.

The heart of the Hi-Flo Industrial *VacuPress*® is a maintenance-free 3/4 hp 11 cfm oil-less rotary vane vacuum pump chosen for its industry proven performance. This powerful pump, combined with larger flow lines and double entrance vacuum bags, achieves full vacuum 100% faster. These features are extremely valuable when dealing with larger curved work and multi-bag operations (The Hi-Flo *VacuPress*® can accommodate up to three bags with the addition of our manifold adapter.)

The vacuum is controlled by a state of the art, precision, "repeatably accurate," digital vacuum switch for maintaining consistent vacuum levels. Our adjustable, easy to read digital switch allows you to set both the pumps shut off and turn on points independently from each other, providing infinite options. This allows variable vacuum settings necessary for the various pressure needs of high elevation shops, curved work, and different glue types.

It also features a dual power switch for both vacuum pressing and vacuum clamping. In the press mode, the vacuum switch will automatically shut the pump off when the proper vacuum level is reached. In the clamp mode the pump operates continuously as a short-cycle hold down clamp for wooden parts.

The Hi-Flo system uses high grade (30 mil) polyurethane double entrance vacuum bags. Polyurethane is a state-of-the-art membrane used extensively in high tech industries because it combines high puncture resistance with excellent elasticity, memory retention, and resistance to extremes of temperature. These qualities make polyurethane the perfect material for maximum performance on flat, curved, and shaped work. *VacuPress*® Industrial Poly bags are so rugged that we warranty them for 5 years against seam tearing and delamination.

Pump Features

- 3/4 hp self-adjusting oil-less rotary vane vacuum pump with thermal overload protection.
- 11 cfm vacuum rate for rapid evacuation time.
- maximum vacuum of 26" HG/automatic shutoff at 24" HG (1834 lbs. per sq. foot).
- easy access, see-through filter jar for dust removal.
- quick disconnect between pump and bag.
- Precision digital vacuum switch with LED display. Easy to set turn on and turn off points.
- Two position power switch for auto cycling and continuous run.
- Dimensions: 10 1/4" W x 10 1/2" H x 27" L; 77 lbs
- operators manual with complete instructions on pressing veneers, curved work, and glues.
- one-year limited warranty.

Bag Features

VacuPress® Vacuum Bags have heat-welded seams and clamp-less, airtight vacuum hose attachments. Bags for the Hi-Flo model are double entry and have convenient, movable C-channel closures that give an air-tight seal and a firm grip against the pull of curved work. The C-channel closure at the end of the bag can be moved down the bag for smaller setups and faster pressing time.

Sizes:

30 mil Industrial Poly

Pressing Capacity	Bag Size
49" x 49"	54" x 60"
49" x 97"	54" x 112"
49" x 121"	54" x 136"
49" x 145"	54" x 160"
61" x 121"	66" x 136"
61" x 145"	66" x 160"

Tear Strength:	400 lbs.
Tensile Strength:	9,000 psi
Elongation:	400-600%
Max Temperature:	225°

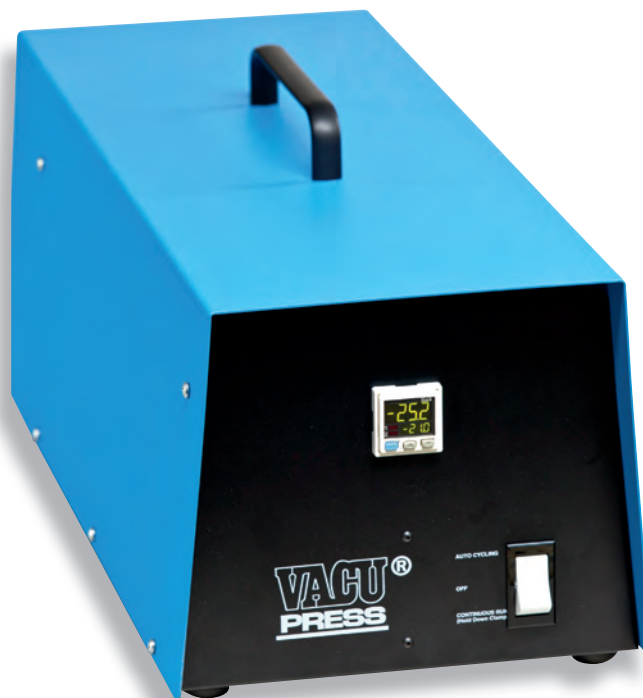
Vacuum Pressing Systems, Inc.

553 RIVER ROAD • BRUNSWICK, MAINE 04011 • 207-725-0935 • FAX 207-725-0932 • www.vacupress.com



STANDARD & PROFESSIONAL

...the number one choice of
woodworkers everywhere.



NEW Digital Vacuum Controls



Since its introduction as the first practical vacuum veneer press, woodworkers have praised this original *VacuPress*® model as a reliable performer. Today, it is still the number one choice of woodworkers everywhere. An excellent entry-level *VacuPress*®, as well as dependable choice for the professional, this system handles the range of veneering and laminating tasks with ease.

Designed and thoroughly engineered to be a maintenance-free performer, the nucleus of both Standard and Professional systems is a 1/3 hp 6 cfm oil-less two chamber rocking piston pump chosen for its industry proven performance. The aluminum alloy vacuum chamber has been specially plated to eliminate the possibility of internal corrosion—an important feature when using water-based glues.

The vacuum is controlled by a state of the art, precision "repeatably accurate" digital vacuum switch for maintaining consistent vacuum levels. Our adjustable, easy-to-read digital switch allows you to set both the pumps shut off and turn on points independently from each other, providing infinite options. This allows variable vacuum settings necessary for the various pressure needs of high elevation shops, curved work, and different glue types.

It also features a dual power switch for both vacuum pressing and vacuum clamping. In the press mode, the vacuum switch will automatically shut the pump off when the proper vacuum level is reached. In the clamp mode the pump operates continuously as a short-cycle hold down clamp for wooden parts.

The Standard *VacuPress*® utilizes flexible, durable 30 mil see-through vinyl bags that accommodate all types of flat and curved work.

The Professional *VacuPress*® uses a 30 mil industrial grade polyurethane vacuum bag which is highly puncture resistant and designed to withstand the rigors of heavy use by those who use their system regularly and demand professional performance from the bag. Polyurethane is a state-of-the-art membrane used extensively in high tech industries because of its durability. *Vacu-Press* Industrial Poly bags are so rugged that we warranty them for 5 years against seam tearing and delamination.

Both Standard and Professional models can operate up to three bags with the addition of our manifold adapter.

Pump Features

- 1/3 hp two chamber rocking piston oil-less vacuum pump with thermal overload protection.
- Aluminum alloy vacuum chamber, prevents internal corrosion.
- 6 cfm vacuum rate for short evacuation time.
- maximum vacuum of 27" HG/ automatic shutoff at 25" HG (1905 lbs. per sq. foot).
- easy access, see-through filter jar for dust removal.
- quick disconnect between pump and bag.
- Precision digital vacuum switch with LED display. Easy to set turn on and turn off points.
- Two position power switch for auto cycling and continuous run.
- Dimensions: 9 1/2" W x 9 1/2" H x 22" L; 40 lbs.
- operators manual with complete instructions on pressing veneers, curved work, and glues.
- one-year limited warranty.

Bag Features

VacuPress® Vacuum Bags have heat-welded seams and clampless, airtight vacuum hose attachments. Bags for both Standard and Professional models are double entry and have convenient, movable C-channel closures that give an air-tight seal and a firm grip against the pull of curved work. The C-channel closure at the end of the bag can be moved down the bag for smaller set-ups and faster pressing time.

Sizes: Pressing Capacity (Bag Size)

30 mil Vinyl

49" x 49" (54" x 60") 49" x 97" (54" x 112")
49" x 121" (54" x 136") 49" x 145" (54" x 160")
61" x 121" (66" x 136") 61" x 145" (66" x 160")

30 mil Industrial Poly

49" x 49" (54" x 60") 49" x 97" (54" x 112")
49" x 121" (54" x 136") 49" x 145" (54" x 160")
61" x 121" (66" x 136") 61" x 145" (66" x 160")

Custom Bags Available

VACUUM BAG MATERIALS COMPARISON

TYPE	TEAR STRENGTH	TENSILE STRENGTH	ELONGATION	MAX TEMP
POLY	400 lbs.	9,000 psi	400-600%	225°
VINYL	280 lbs.	2,600 psi	200-400%	130°

Vacuum Pressing Systems, Inc.

553 RIVER ROAD • BRUNSWICK, MAINE 04011 • 207-725-0935 • FAX 207-725-0932 • www.vacupress.com



COMPACT 300 VACUPRESS®

Performance for the
professional –
Priced for the budget



Vacuum Pressing Systems, the leader in vacuum laminating technology for woodworking, is pleased to offer the Compact 300 Vacupress® Pump, an affordable, versatile system for veneering, laminating and multipurpose clamping.

The Compact 300 Vacupress® Pump model is specifically designed for the home workshop. The Compact 300 is the perfect choice for woodworkers who want to explore the exciting possibilities of veneering and laminating with vacuum without the expense of larger systems or the need for compressed air.

The heart of the system is an extremely quiet, 3 CFM rocking piston pump, developing 1750 lbs of pressing force per square ft. The adjustable vacuum switch monitors the vacuum level turning the pump on and off as needed.

Compact 300 Vacupress® vacuum pressing bags have heat welded seams and are made from a durable, flexible 30 mil vinyl as well as high puncture resistant, extremely flexible 30 mil industrial grade polyurethane.

From the C-channel bag closure to the quick disconnects, cleanable filter jar and molded bag nipple, the Compact 300 Vacupress® system delivers the same engineered quality and performance standards as our professional vacuum pressing line. No detail has been overlooked.

The Compact 300 Vacupress® system comes complete and ready to use, no additional parts are required, simply choose a Vacupress® bag to connect to. Since many woodworkers may be trying their hand at veneering for the first time, a comprehensive owner's manual is included to assist in successful vacuum pressing.

Compact 300 Vacupress® Pump Specifications and Features:

- 3 CFM, rocking piston vacuum pump, cool and extremely quiet running, reaching maximum vacuum of 25HG (No compressor needed). Easy access, see-through filter jar with removable bowl for cleaning. Vacuum gauge for monitoring the vacuum process. Adjustable vacuum switch auto cycles the pump as needed to keep a consistent vacuum level throughout the vacuum process.
- Three position power switch, off, auto cycle and continuous run.
- 10 ft of braided vacuum hose with quick disconnects between the pump and bag.
- 25 ft of pressure sensitive neoprene vacuum tape to create a hold down table for routing and sanding parts.
- Comprehensive operator's manual Includes thorough instructions on general veneering, pressing techniques and vacuum clamping.

Bag Features

VacuPress® Vacuum Bags have heat welded seams and clampless, airtight vacuum hose attachments. Both vinyl and polyurethane Vacu-Press bags are single or double end loading with a convenient, C-channel closure that gives an air-tight seal and a firm grip against the pull of curved work. Patch kit included.

Sizes: Pressing Capacity (*Bag Size*)

30 mil Vinyl

25" x 37" (30" x 48")
49" x 49" (54" x 60")
49" x 97" (54" x 112")

30 mil Industrial Poly

25" x 37" (30" x 48")
49" x 49" (54" x 60")
49" x 97" (54" x 112")

Custom Bags Available

Vacuum Pressing Systems, Inc.

553 River Road, Brunswick, Maine 04011 • 207-725-0935 • Fax 207-725-0932 • www.vacupress.com



COMPACT 150VACUPRESS®

Performance for the
professional –
Priced for the budget

Vacuum Pressing Systems, the leader in vacuum laminating technology for woodworking, is pleased to offer the Compact 150 Vacupress® Pump, an affordable, versatile system for veneering, laminating and multipurpose clamping.

The Compact 150 Vacupress® Pump model is specifically designed for the home workshop. The Compact 150 is the perfect choice for woodworkers who want to explore the exciting possibilities of veneering and laminating with vacuum without the expense of larger systems or the need for compressed air.

The heart of the system is an extremely quiet, two chamber 1.5cfm rocking piston pump, developing 1750 lbs of pressing force per square ft. The adjustable vacuum switch monitors the vacuum level turning the pump on and off as needed.

Compact 150 Vacupress® vacuum pressing bags have heat welded seams and are made from a durable, flexible 20 or 30 mil vinyl as well as high puncture resistant, extremely flexible 30mil industrial grade polyurethane.

From the C-channel bag closure to the quick disconnects, cleanable filter jar and molded bag nipple, the Compact 150 Vacupress® system delivers the same engineered quality and performance standards as our professional vacuum pressing line. No detail has been overlooked.

The Compact 150 Vacupress® system comes complete and ready to use, no additional parts are required, simply choose a Vacupress® bag to connect to. Since many woodworkers may be trying their hand at veneering for the first time, a comprehensive owner's manual is included to assist in successful vacuum pressing.



Compact 150 Vacupress® Pump Specifications and Features:

- 1.5 CFM dual chamber, rocking piston vacuum pump, cool and extremely quiet running, reaching maximum vacuum of 25HG (No compressor needed). Easy access, see-through filter jar with removable bowl for cleaning. Vacuum gauge for monitoring the vacuum process. Adjustable vacuum switch auto cycles the pump as needed to keep a consistent vacuum level throughout the vacuum process.
- Three position power switch, off, auto cycle and continuous run.
- 10 ft of braided vacuum hose with quick disconnects between the pump and bag.
- 25 ft of pressure sensitive neoprene vacuum tape to create a hold down table for routing and sanding parts.
- Patch kit for bag repair.
- Comprehensive operator's manual Includes thorough instructions on general veneering, pressing techniques and vacuum clamping.

Bag Features

VacuPress® Vacuum Bags have heat welded seams and clampless, airtight vacuum hose attachments. Both vinyl and polyurethane Vacu-Press bags are single end loading with a convenient, movable C-channel closure that gives an air-tight seal and a firm grip against the pull of curved work.

Sizes: Pressing Capacity (*Bag Size*)

30mil Vinyl

25" x 37" (30" x 48")
49" x 49" (54" x 60")

30 mil Industrial Poly

25" x 37" (30" x 48")
49" x 49" (54" x 60")

Custom Bags Available

Vacuum Pressing Systems, Inc.

553 River Road, Brunswick, Maine 04011 • 207-725-0935 • Fax 207-725-0932 • www.vacupress.com



...the number one
choice of
woodworkers
everywhere.

VACUPRESS® FLIPTOP TABLE PRESS



THE LIFT TOP FRAME TABLE PRESS FOR EASY ACCESS

The **VacuPress® FlipTop table press** is the latest development from Vacuum Pressing Systems meeting the demand for a heavy duty top loading vacuum press. Designed primarily for pressing flat panels as well as low profile curved work, up to 10" with the standard membrane, the FlipTop offers an easy access laminating system.

Place the work on the table, lower the frame, lock the latches and turn on the vacuum pump. The force of atmospheric pressure automatically seals the gasket to the table and at the same time applies pressure to the work. When the pressing cycle is complete, release the vacuum and raise the frame. Simple and easy to use, the VacuPress® FlipTop frame press brings a new level of speed and convenience to vacuum veneering and laminating.

The VacuPress® Fliptop is offered in two forms, a frame with table base, or just the frame and you build your own table. Both forms come as a kit, ready to assemble with detailed instructions. Modular construction with universal connectors makes assembly a breeze.

LIFT TOP FRAME TABLE PRESS

Available pressing sizes	Overall Frame Size
49"x 97"	55"x103"
49"x 121"	55"x127"
61"x 97"	67"x103"
61"x 121"	67"x127"

*Custom sizes available upon request.
See other side for detailed specifications.*



**See Reverse Side
FOR MORE!**

Vacuum Pressing Systems, Inc.

553 River Road, Brunswick, Maine 04011 • 207-725-0935 • Fax 207-725-0932 • www.vacupress.com



Tough 30mil industrial grade clear polyurethane membrane with special pleated "box construction" allows for full size panel loading up to 6" and up to 10" on smaller work. Custom height membrane available upon request.

Constructed from 1 1/2" x 1 1/2" and 1 1/2" x 3" heavy wall structural aluminum extrusion for a light but extremely strong vacuum frame and table. The universal connector system provides a quick and easy method of modular assembly.

5 adjustable feet for accurate leveling of table base.

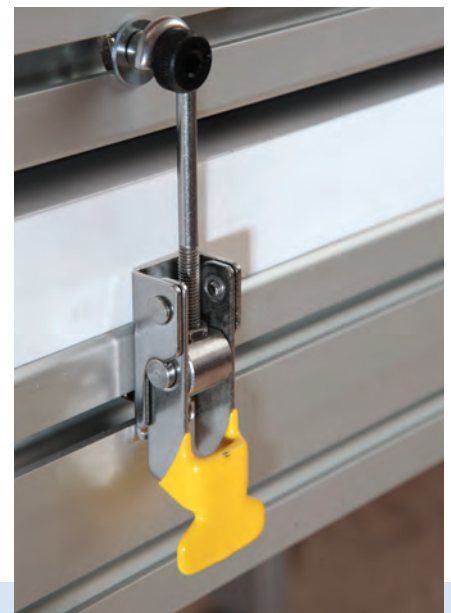
Includes tough, high impact resistant, one piece .080 thick ABS plastic sheet for constructing a seamless airtight table surface.

Pneumatic cylinders with three position control valve for easy lifting and lowering of the vacuum frame. Frame only purchases comes with gas springs.

Hold down latches for creating initial seal until vacuum "locks" the frame to the table.

Comprehensive step by step instruction manual for easy assembly.

T-slot retaining strip locks the membrane into the aluminum extrusion for a solid connection against the pull of vacuum pressure. Multi ribbed neoprene gasket for an airtight seal time after time.



WHAT'S INCLUDED* FLIPTOP FRAME AND TABLE

Frame includes:

- 1 1/2" x 1 1/2" heavy wall aluminum extrusion vacuum frame w/ corner connectors
- 30mil industrial grade pleated construction vacuum membrane
- T-slot retaining strips for locking in membrane to frame
- Multi ribbed neoprene vacuum gasket
- Quick lock hold down latches
- Heavy duty adjustable hinges
- ABS .080 plastic sheet for table surface

When ordering only the FlipTop frame (no table base), gas springs, mounting hardware, and frame handle are included for lifting and lowering the frame as well as vacuum connection and hose, as listed to the right.

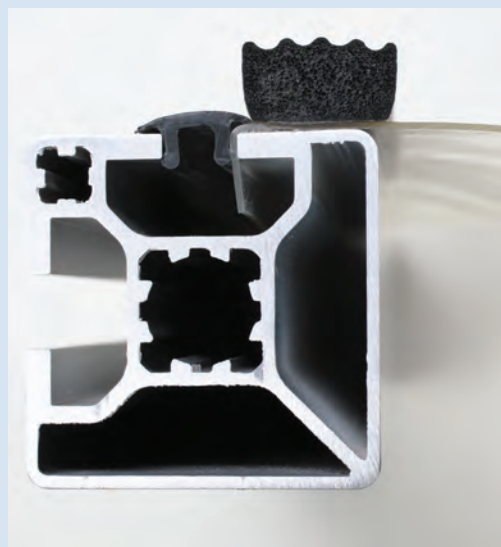


Table base includes:

- 1 1/2" x 3" heavy wall aluminum extrusion frame and leg members with 1 1/2" x 1 1/2" cross supports and angled leg braces. Universal connectors
- Large adjustable locking feet
- Trunion style pneumatic cylinders with mounting hardware
- Quick disconnect air fittings and tubing
- Three position control valve for pneumatic cylinders with flow controls and silencers
- Table mounted vacuum connection with 10' of steel spring coil vacuum hose and air release valve
- Complete detailed instruction manual for easy assembly

**Not included is table substrate (1" material recommended) and 1/4" evacuation grid board. These items are carefully detailed in the instruction manual.*



... the number one
choice of
woodworkers
everywhere

VacuPress Vacuum bags have been the backbone of our business since our first introduction of vacuum pressing technology to the woodworking field twenty five years ago. Simple, straight-forward and easy to use, vacuum bags have found their way into almost every woodworker's shop. They conform to almost any shape and can be rolled up and put away for easy storage. So, how to improve upon something that has proven itself so consistently for so long?

Introducing vacuum-proof zipper bags. Opening on three sides like a suitcase, our zipper bags allow full, unrestricted access to the pressing area... no sliding or struggling to get work into the bag. They provide the easy access of a frame press while offering the versatility and ease of storage of a regular bag, making zipper bags a perfect blend of the two. Simply set your project into the bag and zip it closed. The zipper seals perfectly and locks at the end providing a vacuum-proof, sealed environment. These zipper bags are ideal for repeated, industrial use.

Our zipper bags are made from 30mil industrial polyurethane for maximum puncture resistance, durability and flexibility. Our polyurethane bags are so rugged that we warranty them for five full years against seam de-lamination and tearing.

VACUPRESS® VACUUM PROOF ZIPPER BAGS



VACUUM PROOF ZIPPER BAG SPECS (30MIL INDUSTRIAL POLYURETHANE)

Bag Size	Pressing Capacity
54" × 103"	49" × 97"
66" × 127"	61" × 121"

Vacuum Pressing Systems, Inc.

553 River Road, Brunswick, Maine 04011 • 207-725-0935 • Fax 207-725-0932 • www.vacupress.com

VACU CLAMP

NEW FROM VACUPRESS®

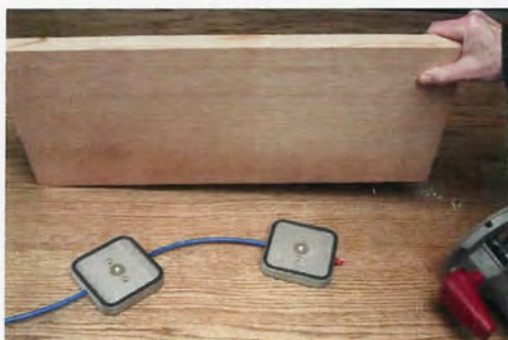
Utilizing atmospheric pressure through vacuum force **VacuClamp** vacuum pods provide a unique, quick, and extremely versatile method of clamping parts with unobstructed access to the work piece.



INTRODUCING THE VACUCLAMP

Arrange the VacuClamp pods on the work surface, connect the vacuum source, and place your work piece on top. Instantly up to 1800 lbs per sq ft of pressure is applied. One, two, three or more pods can be connected together. Vertically, horizontally, on any angle, or any combination makes vacuum clamping simple and versatile to use. Because the pods are only on the underside, access for sanding or machining is unobstructed with no clamping marks.

What makes Vacuum Pressing Systems VacuClamp pods unique is the built in vacuum valve which provides two sided independently controlled clamping. When vacuum is turned on the pods are first drawn down to the work surface for accurate, positive placement. Next, placing the work piece on top engages the vacuum control valve drawing the part to



the pod. Each pod is activated individually by the work piece allowing as few or as many pods to be engaged at once. Pods not holding the work piece are still drawn tight to the work surface with no vacuum loss. Pods can also be permanently mounted to the work surface for repetitive operations or vertical clamping. The pneumatic foot switch provides quick release of the work piece by simply stepping down. Release the pedal and clamping force is instantly reapplied.

VACUCLAMP FEATURES

- 4"x 4"x 5/8" Anodized aluminum vacuum pod with spring loaded release valve for independent two sided clamping. Removable plugs for permanent mounting.
- 1/4" round neoprene rubber gasket set in a recessed groove for an airtight seal.
- Heavy gauge, powder coated open flow pneumatic foot switch. Depress foot pedal to interrupt vacuum flow.
- 20' of vacuum tubing with quick disconnect fitting for use with any VacuPress pump (*Specify your pump model when ordering.*)

KITS AND PRICING

2 Pod Clamp Kit Includes: 2 VacuClamp pods, foot switch and 20' of vacuum tubing with disconnect fittingPrice \$213.00

4 Pod Clamp Kit Includes: 4 VacuClamp pods, foot switch and 30' of vacuum tubing with disconnect fittingPrice \$330.00

Individual VacuClamp PodsPrice \$57.00

Pneumatic Foot SwitchPrice \$88.00

20' Vacuum TubingPrice \$7.50



Vacuum Pressing Systems, Inc.

553 RIVER ROAD, BRUNSWICK, MAINE 04011 • 207-725-0935 • FAX 207-725-0932



PRICE LIST 2023

**PUMPS
BAGS
FLIP TOPS
TOOLS
VIDEOS
GLUES
ACCESSORIES**



**www.vacupress.com
Orders (800)382-4109**

PUMPS



INDUSTRIAL HIFLO VACUPRESS PUMP

11 cfm OIL-LESS
ROTARY VANE
\$1,486.00



PROFESSIONAL VACUPRESS PUMP

6 cfm
ROCKING PISTON
\$927.00



COMPACT 300 VACUPRESS PUMP

3 cfm
ROCKING PISTON
\$623.00



COMPACT 150 VACUPRESS PUMP

1.5 cfm
ROCKING PISTON
\$398.00

BAGS

30 MIL PREMIUM GRADE EXTRUDED POLYURETHANE

**Custom sizes
available; call for
quote.**

ZIPPER PANEL BAGS (pressing capacity)

49"x 97" 30 mil Premium Extruded Polyurethane
61"x 121" 30 mil Premium Extruded Polyurethane

actual bag size

54"x 104"
66" x 128"

model

408 UZ \$1121.00
510 UZ \$1415.00

PANEL BAGS (pressing capacity)

25" X 37" 30 mil Premium Extruded Polyurethane
49" X 49" 30 mil Premium Extruded Polyurethane
49" X 97" 30 mil Premium Extruded Polyurethane
49" X 121" 30 mil Premium Extruded Polyurethane
49" X 145" 30 mil Premium Extruded Polyurethane
61" X 121" 30 mil Premium Extruded Polyurethane
61" X 145" 30 mil Premium Extruded Polyurethane

actual bag size

30" x 48"
54" x 60"
54" x 112"
54" x 136"
54" x 160"
66" x 136"
66" x 160"

model

203 U \$197.00
404 U \$298.00
408 U \$517.00
410 U \$584.00
412 U \$646.00
510 U \$708.00
512 U \$781.00

LAMINATING / STAIRCASE BAGS

8" X 145" 30 mil Premium Extruded Polyurethane
12" X 192" 30 mil Premium Extruded Polyurethane
20" X 252" 30 mil Premium Extruded Polyurethane

actual bag size

12" x 160"
16" x 208"
25" x 268"

model

812 U \$253.00
116 U \$354.00
221 U \$563.00

30 MIL ECONOMY GRADE BLOWN POLYURETHANE

BAGS

49"x 49" 30mil Economy Blown Polyurethane
49"x 97" 30mil Economy Blown Polyurethane
49"x 121" 30mil Economy Blown Polyurethane
49"x 145" 30mil Economy Blown Polyurethane

actual bag size

54"x 60"
54"x 112"
54"x 136"
54"x 160"

model

404 UB \$253.00
408 UB \$412.00
410 UB \$491.00
412 UB \$569.00

BAGS

30 MIL VINYL VACUPRESS BAGS

**Custom sizes
available; call for
quote.**

PANEL BAGS

(pressing capacity)

25" X 37" 30 mil Vinyl
49" X 49" 30 mil Vinyl
49" X 97" 30 mil Vinyl
49" X 121" 30 mil Vinyl
49" X 145" 30 mil Vinyl
61" X 121" 30 mil Vinyl
61" X 145" 30 mil Vinyl

actual bag size

model #

30" x 48"	203 V	\$91.00
54" x 60"	404 V	\$149.00
54" x 112"	408 V	\$235.00
54" x 136"	410 V	\$281.00
54" x 160"	412 V	\$323.00
66" x 136"	510 V	\$354.00
66" x 160"	512 V	\$391.00

LAMINATING BAGS

(pressing capacity)

8" X 145" 30 mil Vinyl
12" X 192" 30 mil Vinyl

actual bag size

model #

12" x 160"	812 V	\$144.00
16" x 208"	116 V	\$182.00

FLIP TOPS

**ALL SIZES REPRESENT
ACTUAL PRESSING
CAPACITY**

**All Flip Top Table Kits feature
Extruded Polyurethane.**

**Custom sizes available;
call for quote.**



FLIP TOP TABLE KITS

49" X 97" 30 mil Polyurethane
49" X 121" 30 mil Polyurethane
61" X 97" 30 mil Polyurethane
61" X 121" 30 mil Polyurethane

model #

408 FTF
410 FTF
508 FTF
510 FTF

Frame Only

\$1997.00
\$2160.00
\$2113.00
\$2242.00

model#

408 FTF-B
410 FTF-B
508 FTF-B
510 FTF-B

Frame & Base

\$5464.00
\$5813.00
\$5747.00
\$5995.00

(ALL Polyurethane Table kits come with 6" height capacity)

Note: Vacuum pump not included. Please add "HF" after the model number if using the Flip Top kit with a HIFLO Industrial Pump.

Prices may change without notice. Check our website for current pricing.



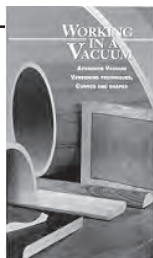
VACUPODS

2 VacuPod CLAMP KIT

2 VacuPress pods, foot switch and 20' of vacuum tubing with disconnect fitting **\$213.00**

4 VacuPod CLAMP KIT

4 VacuPress pods, foot switch and 30' of vacuum tubing with disconnect fitting **\$330.00**



VIDEOS & BOOKS

Item

Working with Veneer
Working in a Vacuum
Vacuum Pressing Made Simple Book/DVD
Advanced Veneering Book

Stock#

WWV \$12.48
WIV \$12.48
VPMS \$24.95
AVT \$39.95



VENEERING TOOLS



VENEER STITCHER

HOT MELT / HFZ/4 ZIG ZAG

Stock#

Stitcher VST \$994.00
Roll Thread VST-R \$13.40



7" GLUE SPREADER WITH HOPPER

Stock#

GS-700 \$235.00



VENEER CUTTER

Item

Stock#

Veneer Cutter VCT \$62.00*
Pack of Blades VCT-10 \$12.00

*10 REPLACEMENT BLADES INCLUDED



VENEER TAPE DISPENSER

Stock#

VTD \$263.00

VENEER TAPE

Item

Stock#

650' WHITE 3 HOLE VT-3 \$9.21
650' WHITE 2 HOLE VT-2 \$9.21
650' WHITE NO HOLE VT-0 \$6.10



EVACUNET

40" WIDE \$3.90 LIN. FT.
SPECIFY LENGTH WHEN ORDERING

**VACU
PRESS**

**VACUUM PRESSING
SYSTEMS, INC.**
553 River Road
Brunswick, ME 04011

Phone (207) 725-0935
Orders (800) 382-4109

www.vacupress.com • vps@vacupress.com

For orders outside the U.S. or Canada, please
contact us for details.



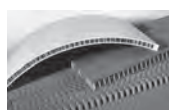
VACUPRESS MANIFOLDS FOR MULTI BAG HOOK-UP

Item

Use With

Stock#

2PORT PRO MAN2ST \$192.00
3PORT PRO MAN3ST \$271.00
2PORT HIFLO MAN2HF \$249.00
3PORT HIFLO MAN3HF \$377.00



RESIN IMPREGNATED HONEYCOMB

Item

Stock#

2'x4'x1/2" HONEYCOMB 1/4" CELL HC-12 \$16.86
2'x4'x3/4" HONEYCOMB 1/4" CELL HC-34 \$24.75
2'x4'x1" HONEYCOMB 1/4" CELL HC-10 \$32.66

(Minimum order - 4 sheets)



UNIBOND 800

* PLEASE SPECIFY CATALYST COLOR
WHEN ORDERING

Item

Stock#

1/2 GALLON UNIBOND 800 UB-12 \$32.14
1 GALLON UNIBOND 800 UB-1 \$52.88
5 GALLONS UNIBOND 800 UB-5 \$226.25
EXTRA CATALYST (per gallon) H800 \$9.04
1.5 POUNDS UNIBOND Blocker UB-BS \$11.44
3 POUNDS UNIBOND Blocker UB-BL \$16.62
UNIBOND TINT WHITE UB-TW \$9.09



Unibond ONE

Item

Stock#

1/2 Gallon Unibond ONE UBO-12 \$21.12
1 Gallon Unibond ONE UBO-1 \$33.53
5 Gallons Unibond ONE UBO-5 \$138.09



VENEER TAMER

Item

Stock#

1/2 Gallon Veneer Tamer VF-12 \$22.43
1 Gallon Veneer Tamer VF-1 \$32.14



Photos above:
Ascension by Tom McLaughlin,
Chairs by Steven Turnino.

Cover:
Reception desk by Wall-Goldfinger; Computer
desk detail by Peter Hains; Writing Desk,
Steve Holman, Holman Studios; Reception
desk by Peter Hains;

VACU[®]
PRESS

Vacuum Pressing Systems, Inc.

553 River Road, Brunswick, Maine 04011 • Toll Free 1-800-382-4109 • 207-725-0935 • Fax 207-725-0932

www.vacupress.com